



MONTHLY MEMBERSHIP PROGRESS REPORT

District 12 N

Results as of: 4/30/2015

GMT: CARL HARRELL

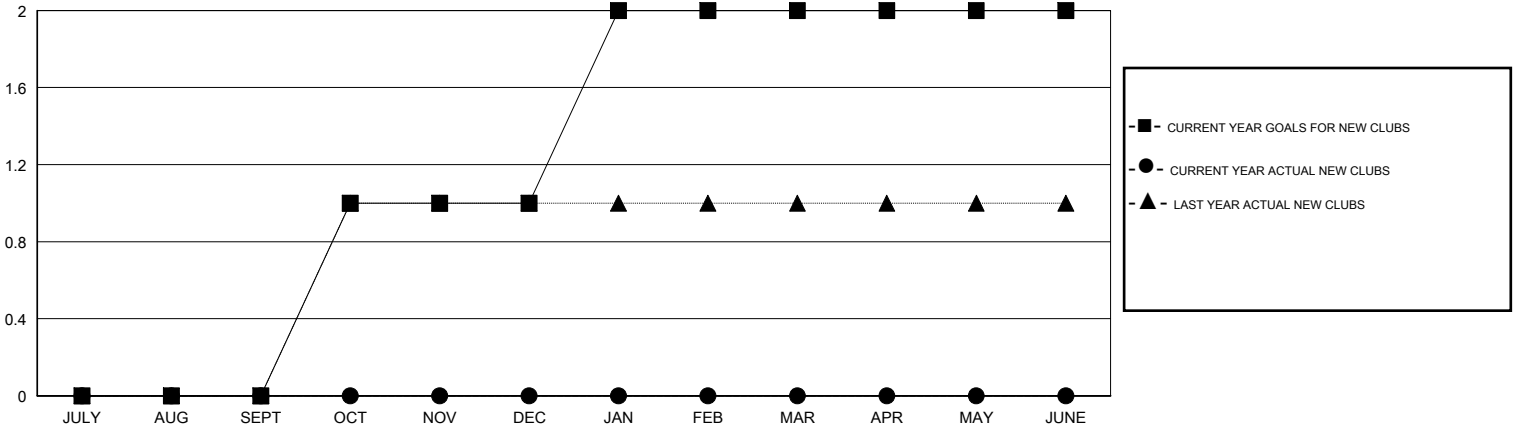
LOCATION TENNESSEE

GMT CA 1

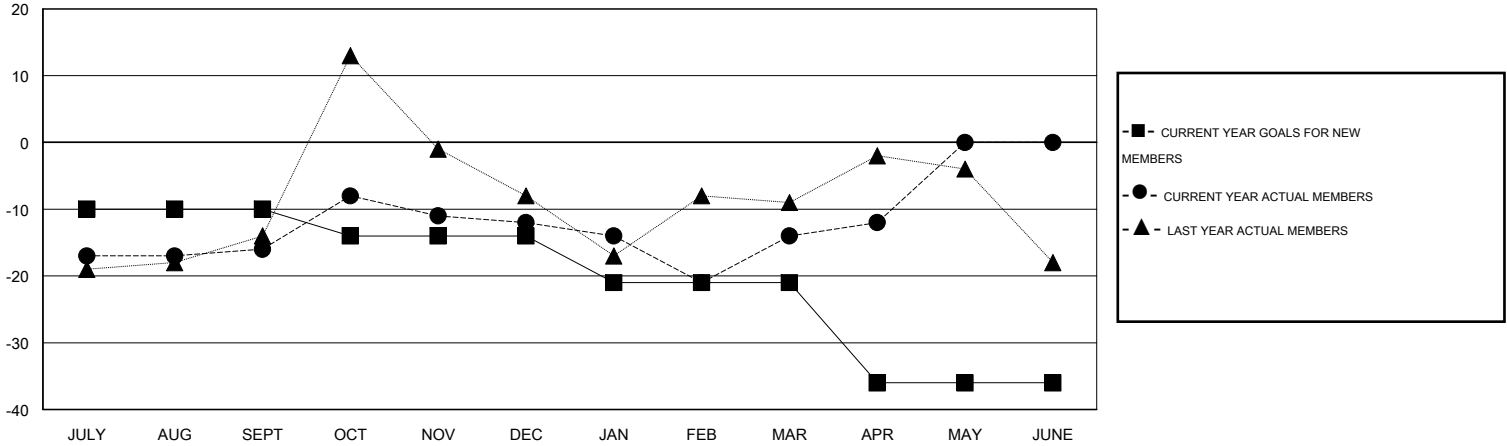
Clubs				
RESULTS FOR 2014-2015				
QUARTER	NEW CLUB GOAL	NEW CLUBS	DROPPED CLUBS	NET GAIN/LOSS
JULY/AUG/SEPT	0	0	0	0
OCT/NOV/DEC	1	0	0	0
JAN/FEB/MAR	1	0	0	0
APR/MAY/JUNE	0	0	0	0

Members				
RESULTS FOR 2014-2015				
QUARTER	NEW MEMBER GOAL	CHARTER AND NEW MEMBERS ADDED	DROPPED MEMBERS	NET GAIN/LOSS
JULY/AUG/SEPT	-10	17	33	-16
OCT/NOV/DEC	-4	26	22	4
JAN/FEB/MAR	-7	24	26	-2
APR/MAY/JUNE	-15	17	15	2

GOALS AND ACTUAL NEW CLUBS CUMULATIVE



GOALS AND ACTUAL MEMBERS CUMULATIVE



DROPPED CLUBS: 0

27 CLUBS OF 39 ADDED 1 OR MORE NEW MEMBERS

GENDER DISTRIBUTION	
MALE	641 (67.54%)
FEMALE	308 (32.46%)

DROPPED MEMBERS	
DECEASED	19
CLUB CANCELLED	0
OTHER	77
TOTAL	96

[CLICK HERE FOR HEALTH ASSESSMENT DATA](#)

FAMILY UNIT MEMBERS	190
HEAD OF HOUSEHOLD	94
NON-HEAD OF HOUSEHOLD	96